

State of Wyoming Corner Record

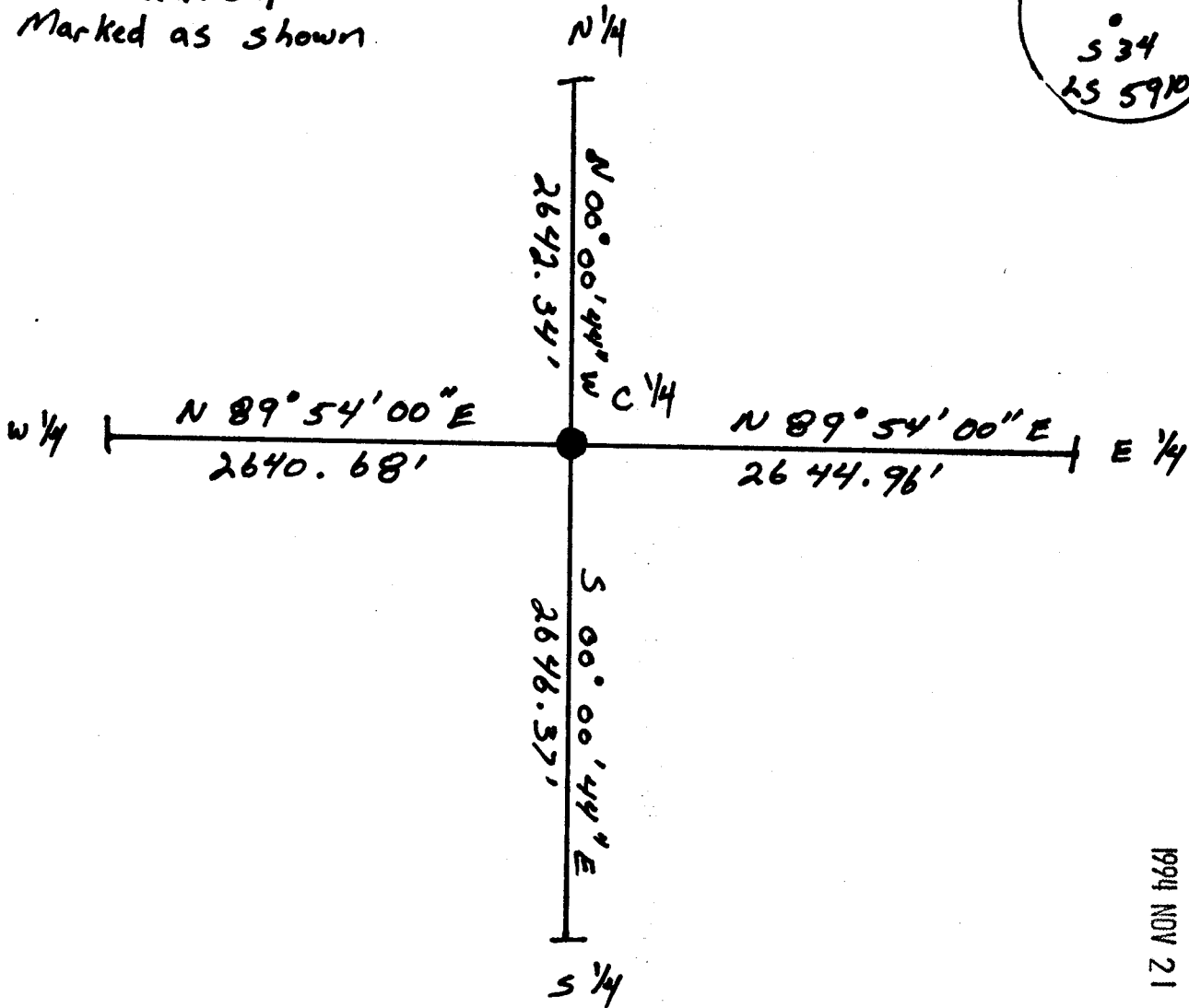
(in compliance with the CORNER PERPETUATION AND FILING ACT, Wyoming Statutes, 1977, Section 36-11-101, et. seq., and the Rules and Regulations of the Board of Registration for Professional Engineers and Professional Land Surveyors)

Reverse side of this form may be used if more space is needed.

Record of original survey and citation of source of historical information (if corner is lost or obliterated). Description of corner monumentation evidence found and/or monument and accessories established to perpetuate the location of this corner. Sketch of relative location of monument, accessories, and reference points with course and distance to adjacent corner(s) (if determined in this survey). Method and rationale for reestablishment of lost or obliterated corner.

Set: 5/8" x 24" Rebar
w/ 2" Alm. Cap
Marked as shown.

SSS
C 1/4
S 34
LS 5910



154094
 RECEIVING
 LARAMIE COUNTY CLERK
 CHEYENNE, WY
 1994 NOV 21 AM 9:04

Date of Field Work: 9/94 Office Reference: 94168

CROSS INDEX DIAGRAM

Firm/Agency, Address

STEIL SURVEYING SERVICES
1102 WEST 19th STREET
CHEYENNE WY 82001

This corner record was prepared by me or under my direction and supervision.
SEAL & SIGNATURE

Telephone Number: (307) 634-7273

A	2	3	4	5	6	7	8	9	10	11	12	13	14	15	16	17	18	19	20	21	22	23	24	25	26	B	
B																											C
C	6		5		4		3		2		1																D
D																											E
E																											F
F																											G
G	7		8		9		10		11		12																H
H																											I
I																											J
J																											K
K																											L
L	18		17		16		15		14		13																M
M																											N
N																											O
O																											P
P	19		20		21		22		23		24																Q
Q																											R
R																											S
S																											T
T	30		29		28		27		26		25																U
U																											V
V																											W
W																											X
X	31		32		33		34		35		36																Y
Y																											Z
Z	2	3	4	5	6	7	8	9	10	11	12	13	14	15	16	17	18	19	20	21	22	23	24	25	26		



BOOK 1388 C 1/4
 Corner Name: SBRPEPLS/PLSW: March 1994

Section: 34 T. 15N R. 66W. 6th P.M. Cross-Index No.: 15 X

0388